

Sunday Mail

SEPTEMBER 18 2016



HIA SUNDAY MAIL
READERS' CHOICE
AWARD

YOU BE THE JUDGE!

VOTE FOR THE BEST FAMILY
FRIENDLY HOME FOR THE
CHANCE TO WIN A \$500
STRATCO VOUCHER

HOME & life

SA's GUIDE TO THE LATEST IN NEW HOME DESIGNS

WIN
\$5000
WORTH OF
BORAL
PAVING
PRODUCTS

Gardening special

SOPHIE THOMSON'S GUIDE
TO OPEN GARDENS SA

Survivor's Nick Iadanza

SHOWS US HIS HOME FAVOURITES

Bringing up baby

NIFTY NURSERY IDEAS

Donna Hay

WHO WANTS DOUGHNUTS?

LIVING THE DREAM

A CUSTOM DESIGN IN ONE OF
ADELAIDE'S BEST SUBURBS

“
The overall
feel of the house
is my favourite
thing

Words ABBY MOULTON
Pictures NICK CLAYTON

A home worth waiting for

For this family of five, the need for more space led them to knock down an investment property and build a custom home in the eastern suburbs

For a brilliant blend of luxury and versatility, Nicole and husband Jim turned to Rendition Homes to build their gracious custom two-storey family abode. Needing more space for their three boys, Matthew, Alex and Christian and thinking long-term, Nicole says they opted for a floorplan that would allow flexibility in the future.

“It is very versatile in that we can change it as the needs of our family change,” Nicole says, who has lived in the home with her family for about a year.

To cater for their needs the home has five bedrooms, 2.5 bathrooms, an upstairs retreat with adjacent balcony, a library, formal dining room, open-plan living/meals and kitchen and a private study, plus an undercover alfresco.

Known for being a custom builder without the “custom builder” price, the family had Rendition Homes’ Wayne Fazzalari assist them in constructing their perfect home on a block they owned in St Georges. Knocking down their investment property to build, they had faith in Wayne and the Rendition Homes team.

“We know he has been in the industry for 20 years, he’s local, we knew he had a good eye and that he took a lot of pride in his work,” Nicole says explaining that their choice was a “no brainer”.

“We saw a floorplan and it was absolutely perfect. From that point we went off and looked at other homes and thought about it, but we always came back to this particular floorplan.”

While she had only seen the home’s concept in booklets, Nicole says she wasn’t worried, explaining that their list of desired must-haves and additions was always going to personalise it to suit their family.

This custom home has been completed with all bells and whistles as well, which is apparent in the white luxury kitchen which features a large island bench, dropped bulkhead ceiling and a full-length walk-in pantry directly behind the kitchen. The laundry and powder room is nearby for modern convenience.

At the rear, a series of large decks has been built with the lie of the land and a wide alfresco is adjacent the open-plan meals/family living providing a seamless zone for indoor and outdoor entertaining.

“Everything was upgraded and we added a lot more to it externally and internally which they were very happy to accommodate”, Nicole says. “The previous home we were in had lovely aspects. We had a single-storey home, but the block was elevated enough so we could actually see the sea.”

Not wanting to compromise anything as far as light and space went in their new home, the couple says Rendition Homes did everything they could to make their upgrades work.

“We got 3m-high ceilings on both levels, lots

of space, the orientation was great and we raised it up on the block a little bit so we didn’t feel enclosed.”

Despite being pregnant with Christian, now 8 when first starting this project, Nicole says the process only took as long as it did because of her and Jim’s busy schedules.

Jim, a doctor and Nicole, a qualified nurse who now has her hands full with her three boys, says that the actual home build only took a very short amount of time and went very smoothly.

With the main reason for their move being the need for an increase in space, the more than 330sqm of living area over two levels now provides them with all the room they need.

“We’ve got a lot more space, together and apart – it’s very flexible,” Nicole says.

“We’ve had a Christmas here and birthday celebrations, it’s nice to have a bit more space for those things”.

Despite downsizing from a large block of about 900sqm to their current 400sqm block, their new home is bigger while still leaving space for a decent backyard complete with a garage, grassed area and decking.

“Of course, with children and a dog we did need to accommodate,” Nicole says.

“It’s a lovely area, we’re looking at getting outdoor furniture so we can use it more – it’s just like another room.

“I think the overall feel of the home is my favourite thing, it’s not too precious, but it’s not too palatial, so it has this lovely feeling we know our old home had.”

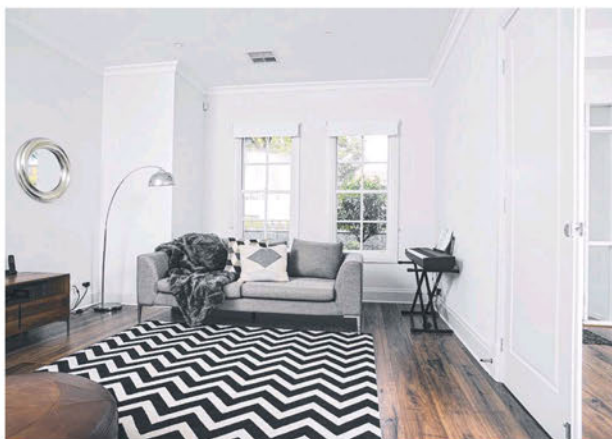
By capturing and replicating the bright and spacious feel of their previous home Nicole has been very pleased with the outcome and says that she loves the light feeling which is evident as soon as you step inside.

“I also certainly like all of the mod cons – the bathrooms are lovely, the kitchen and, of course, the appliances.”

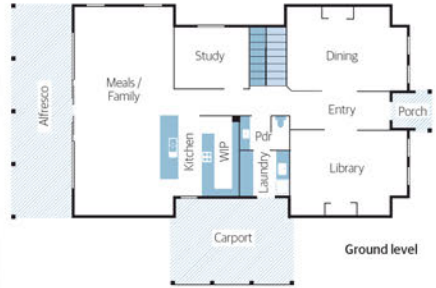
The timeless and grand white rendered facade is complete with ageless interior finishes, complementing Nicole’s beautiful interior style nicely.

“It has a warm scandi sort of feel”, says Nicole, who still has two rooms to furnish. “I believe in finishing rooms rather than doing a little bit in each.”

“We went off and looked at other homes and thought about it, but we always came back to this particular floorplan”



Home view



Off the plan

Builder Rendition Homes
Design Custom
Price From \$358,000
Location Not on display. Find similar designs at 42 Waterford Circuit, Lightview
Open Sat | Sun | Mon | Wed, 1pm-5pm
Contact renditionhomes.com.au
Details 400.05sqm total size | 177.63sqm living space downstairs | 155.51sqm living space upstairs | 14.37m width | 21.43m depth | 5 bedrooms | 2.5 bathrooms | 3m ceilings



Features you'll love

Laminate: Despite being "hardwood all the way" Nicole went for laminate and has been pleasantly surprised. Like many of us, the "clicky" sound footsteps tend to make can be a deterrent, however as promised the thick underlay prevented this. Aside from being more affordable it is also much more durable (making it ideal for children and pets).

Retreat space: The upstairs retreat is perfect for a parents' haven, a sanctuary away from the open-plan living zone. Finished off perfectly with a front-facing balcony, luxury meets functionality.

Master bedroom: Fully equipped with its own large walk-in wardrobe acting as an entry to the stylish modern ensuite, the master bedroom has factored in room for two with extra hanging space and a double-sink vanity.

